



UNIVERSITY OF MISSOURI-KANSAS CITY

Pathway help: Changing Mobile Font Size

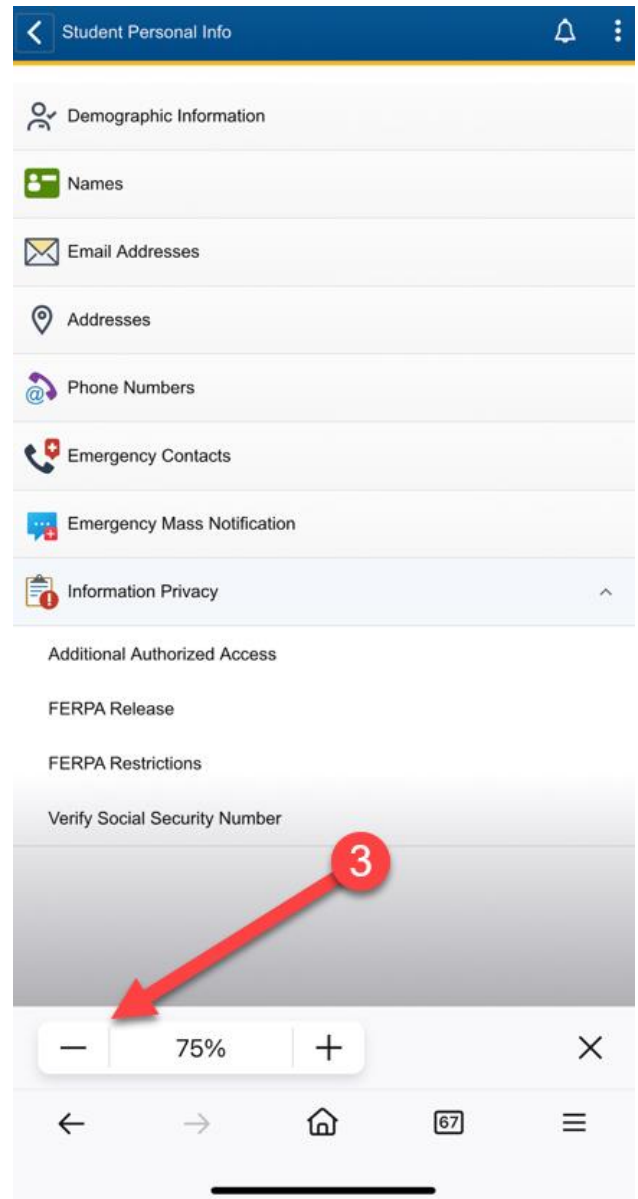
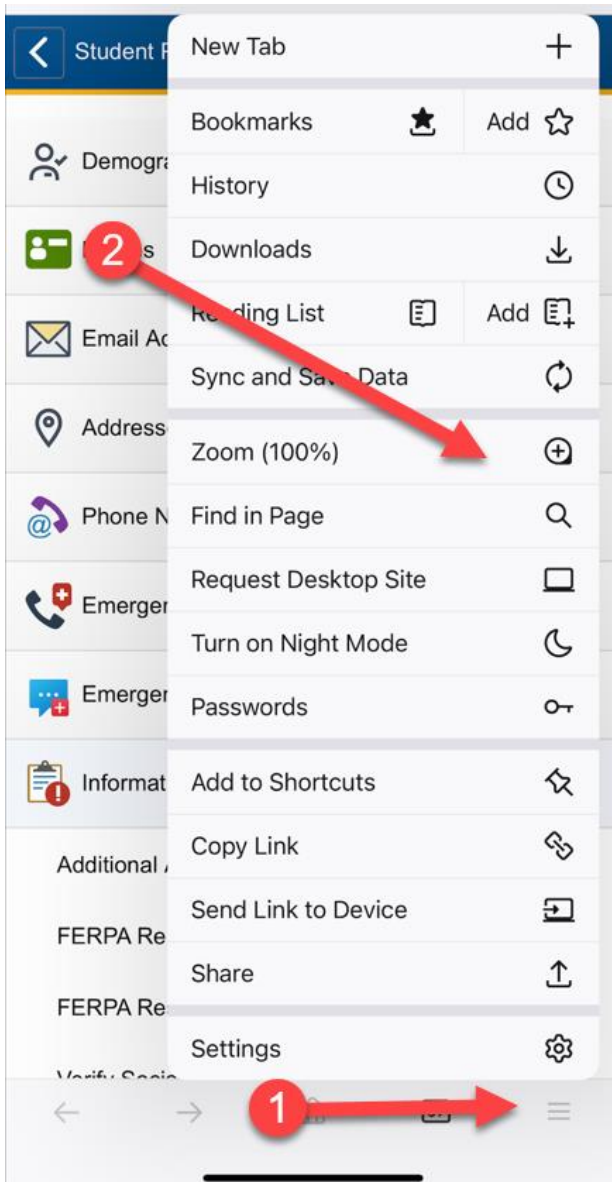
OFFICE OF THE REGISTRAR

Changing your font size on a mobile device

If you experience not being able to see all information on a page when using Pathway, you should attempt to reduce the font size for your internet browser. Here are instructions for reducing/changing your font size with three commonly used mobile internet browsers: Firefox, Safari, and Chrome.



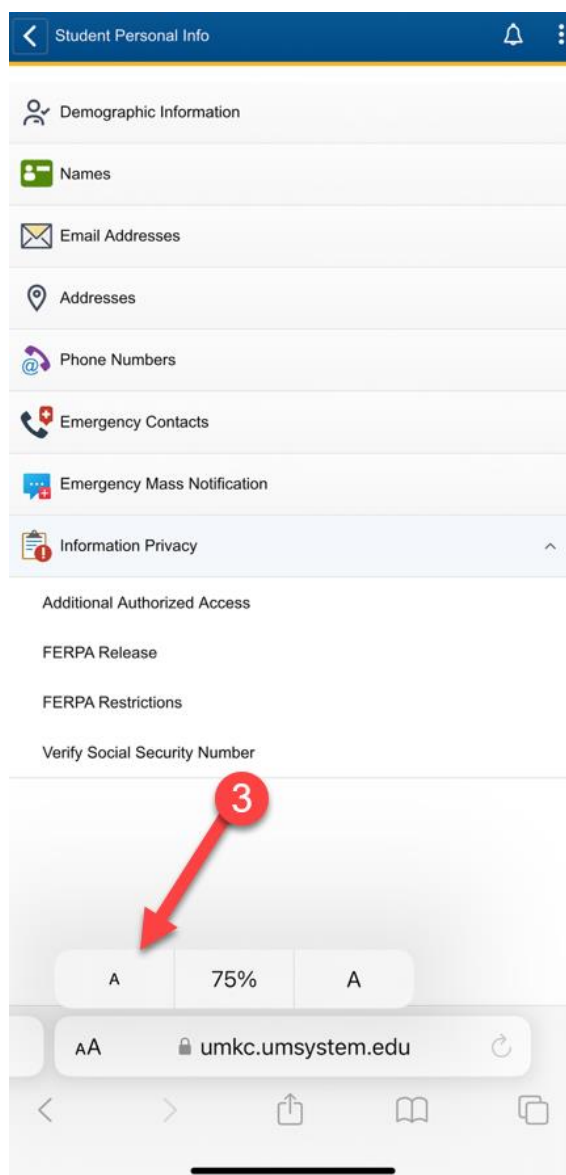
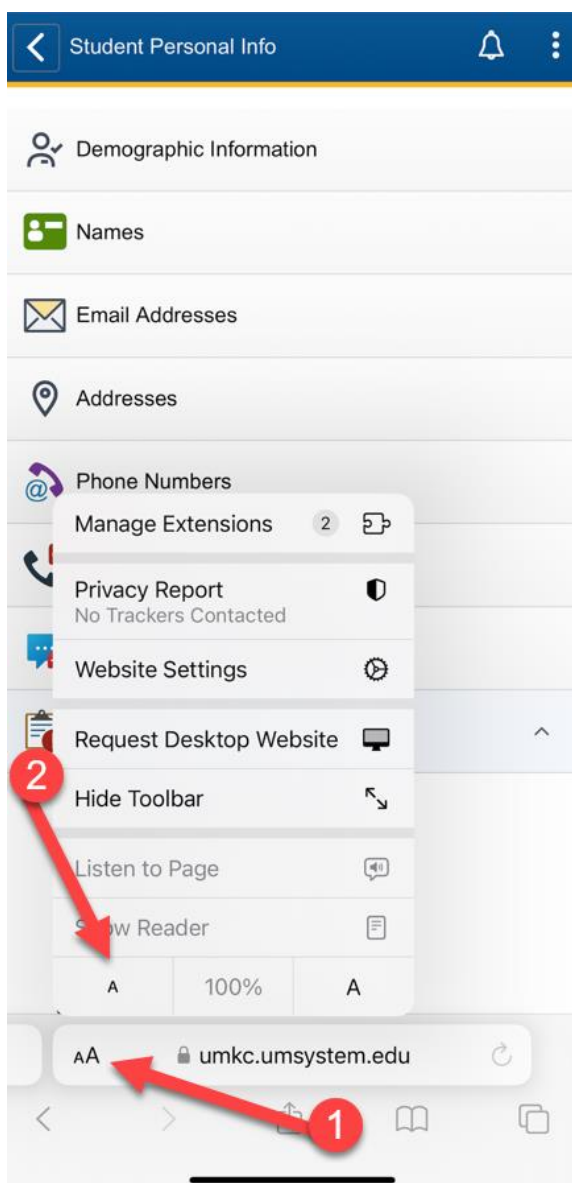
1. Click the **Menu** icon in the lower right hand corner
2. Select **Zoom (100%)**
3. Adjust the font size until you can see all your options





Safari

1. Click the **AA** font size icon in the lower left hand corner
2. Select **Small A** to reduce the font size
3. Adjust the font size until you can see all your options





1. Click the **Menu** icon in the lower right hand corner
2. Select **Zoom text**
3. Adjust the font size at the top of your screen until you can see all your options

